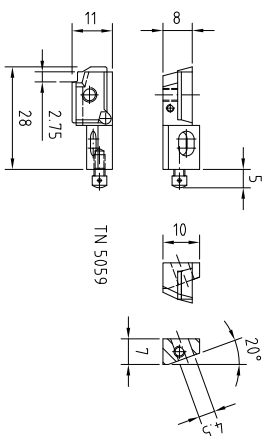
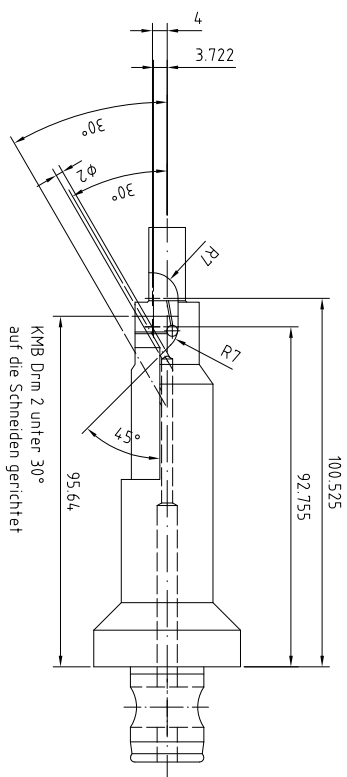
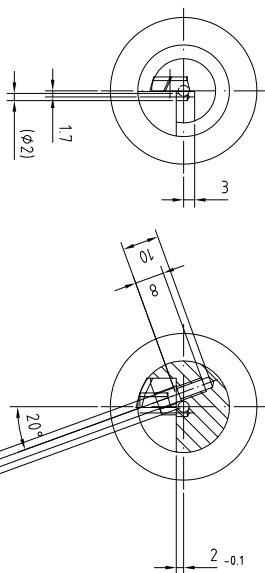
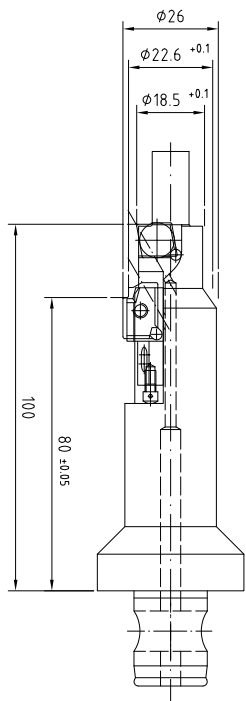
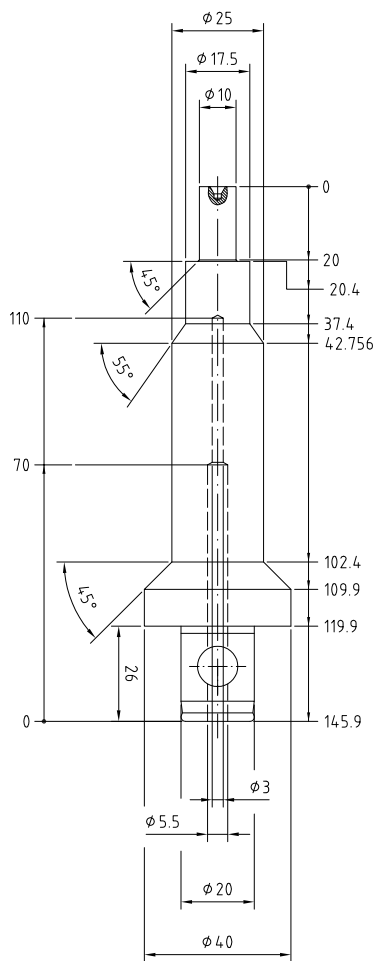
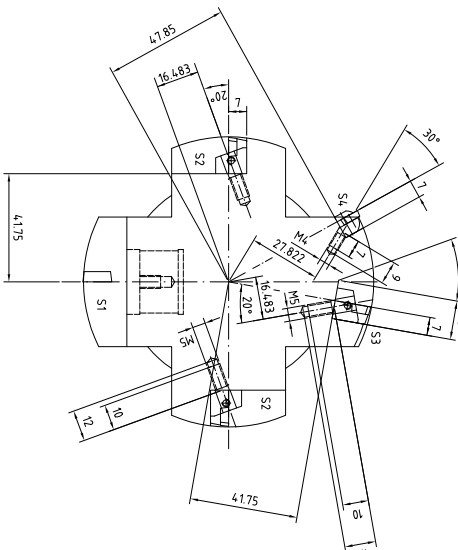
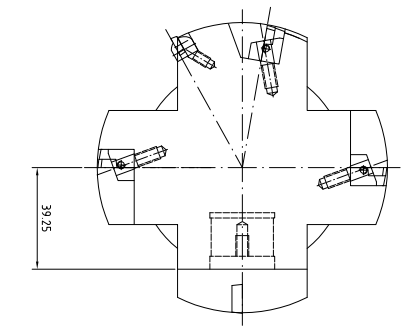
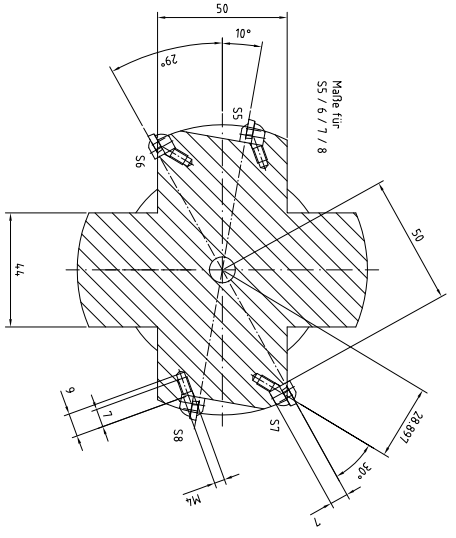
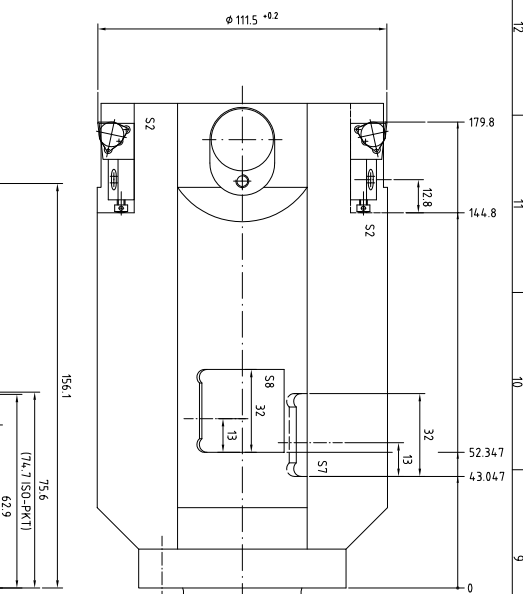


ABS 40-ES-M
 gefertigt in
 Lizenz Komet

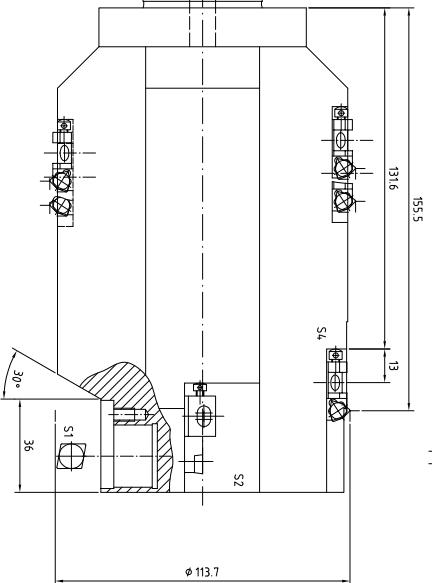


Sonder WSP gefertigt aus C... 09
 B 0295-00/4

Zust. Änderung		Datum		Name		DW-K		K13722			
DN 788 -fermitel grade			Oberfläche			Maßstab 1:1			Position - Menge -		
Bearb. ES/70/2001 ZI			Name			WSP Stufensenker			Bauf.		
Nom.						TN 3722			Bl.		

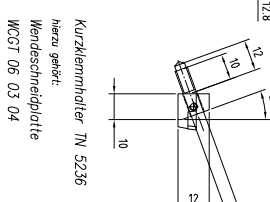
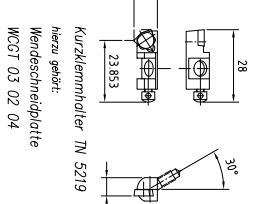
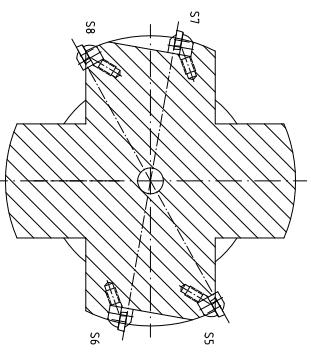
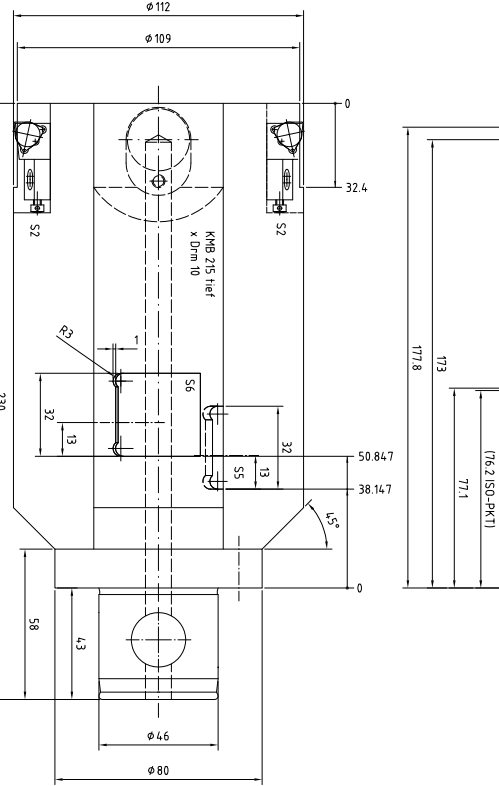


ABS 90-ES-M
gefertigt in
Lienz Fa. Konet



ABS 90-ES-M
gefertigt in
Lienz Fa. Konet

Fahrradreinsatz MAC- FVL 30
hierzu gehört:
Wendeschneidplatte
CPGT 09 T3 04



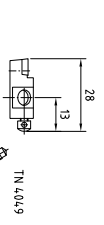
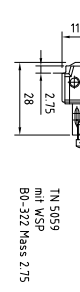
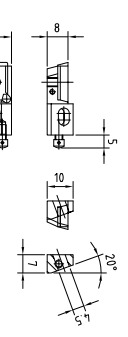
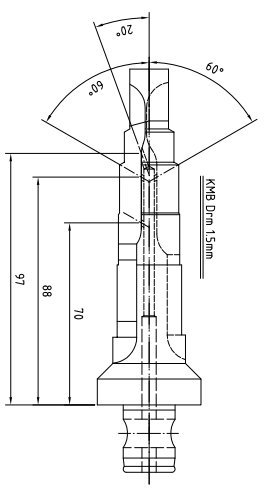
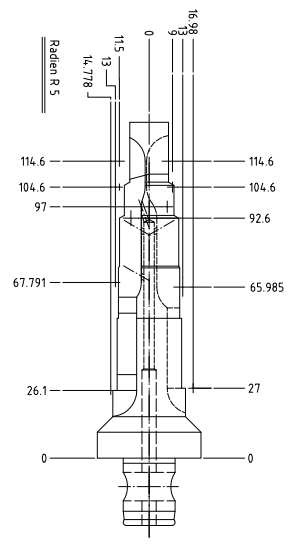
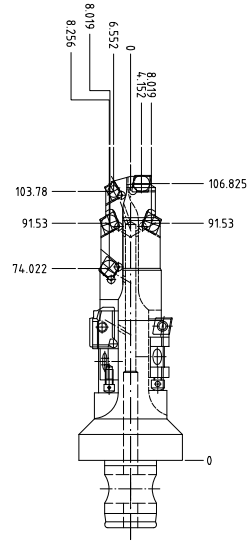
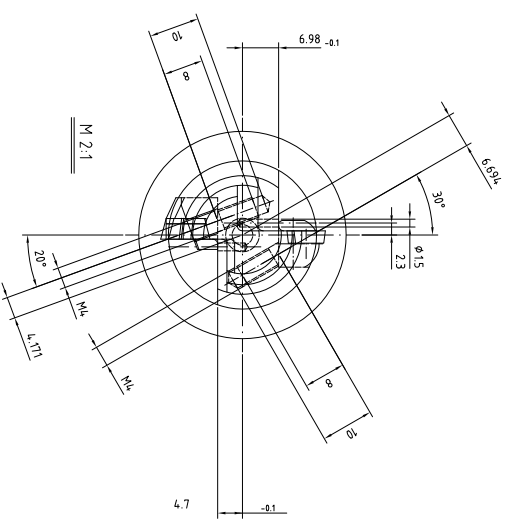
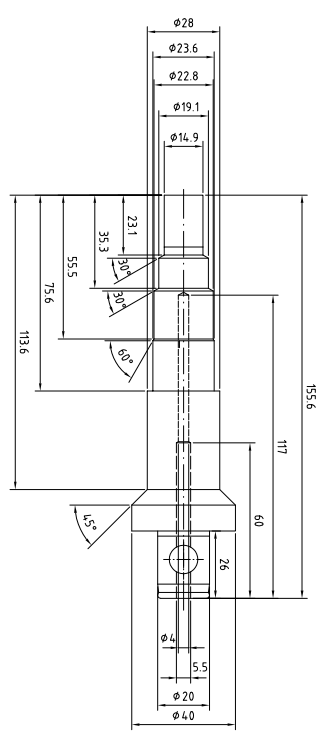
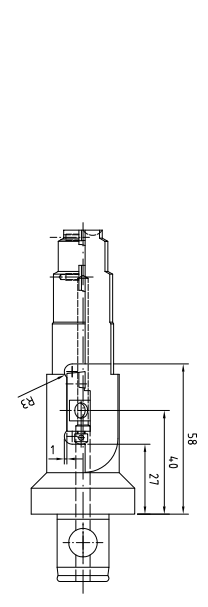
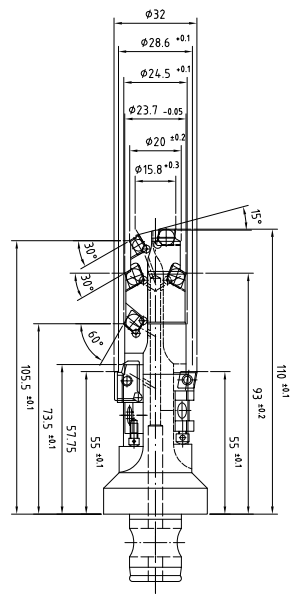
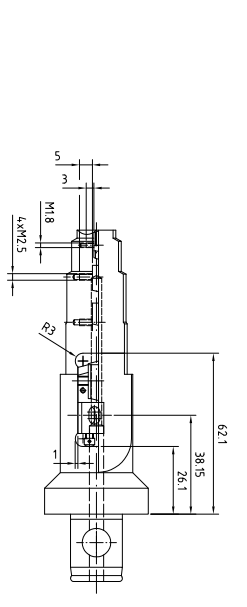
Kurzklammerhalter TN 5219
hierzu gehört:
Wendeschneidplatte
WCGT 03 02 04

Kurzklammerhalter TN 5236
hierzu gehört:
Wendeschneidplatte
WCGT 06 03 04

Vergütungsstahl
nitrenen auf 450 + 100 HV, Nitrierziele (Nz) = 0.2 mm
Gewinde und/oder bezeichnen Bereich abdecken.

Nitrierstahl
nitrenen auf 900 + 200 HV, Nitrierziele (Nz) = 0.2 mm
Gewinde und/oder bezeichnen Bereich abdecken.

Zusatz			Datum			DW-Nr.		
DN1198	Steuerung	Hersteller	TN 5219	WSP	WSP	Stuhl	Menge	11/20
gezeichnet von:	gezeichnet von:	gezeichnet von:	gezeichnet von:	gezeichnet von:	gezeichnet von:	gezeichnet von:	gezeichnet von:	gezeichnet von:
Kont.	Kont.	Kont.	Kont.	Kont.	Kont.	Kont.	Kont.	Kont.
Prüf.	Prüf.	Prüf.	Prüf.	Prüf.	Prüf.	Prüf.	Prüf.	Prüf.
WSP Stuhlfersenher								
TN5219								



kurzformhalter
SFCOR 07 CA-06 PG

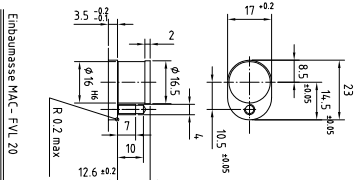
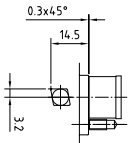
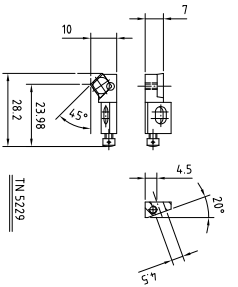
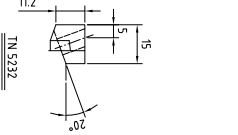
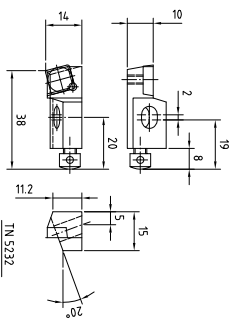
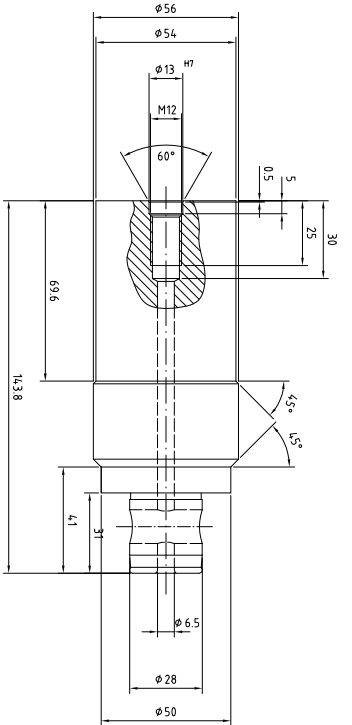
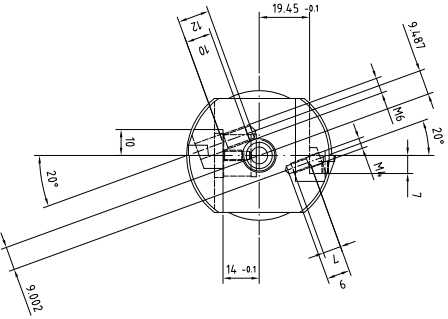
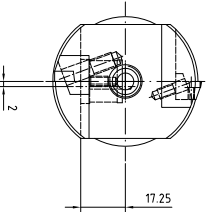
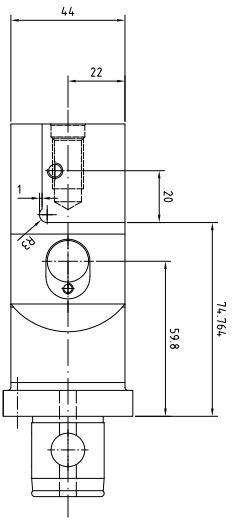
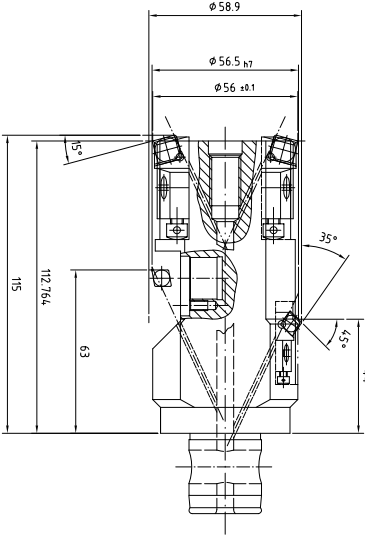
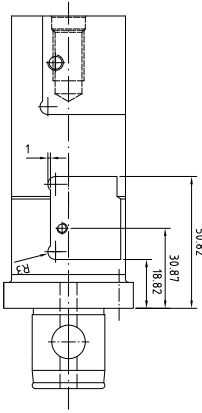
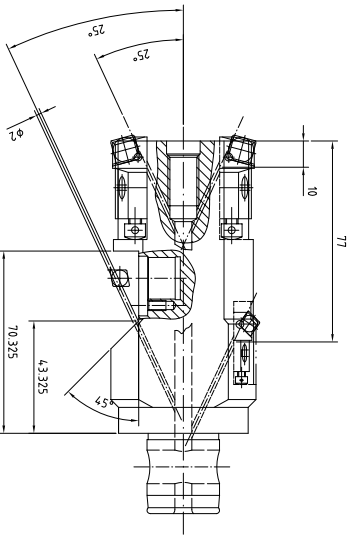
Hierzu gehört:
Wendeschneidplatte
COMM 06 02 04

XCONT 04 01 04 EN

Verjüngungsstahl
nitrieren auf 450 + 100 HV, Nitrieriefe (Nit) = 0.2 mm
Gewinde und/oder bezeichneten Bereich abdecken.

Nitrierstahl
nitrieren auf 900 + 200 HV, Nitrieriefe (Nit) = 0.2 mm
Gewinde und/oder bezeichneten Bereich abdecken.

Zust		Sammelteil gdw.		Zust		Datei		Mitarbeiter		Mitarbeiter		Mitarbeiter	
DN1718													
WSP Stufenanker						TN 3718							

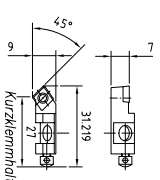
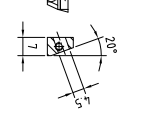
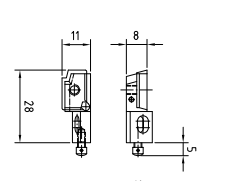
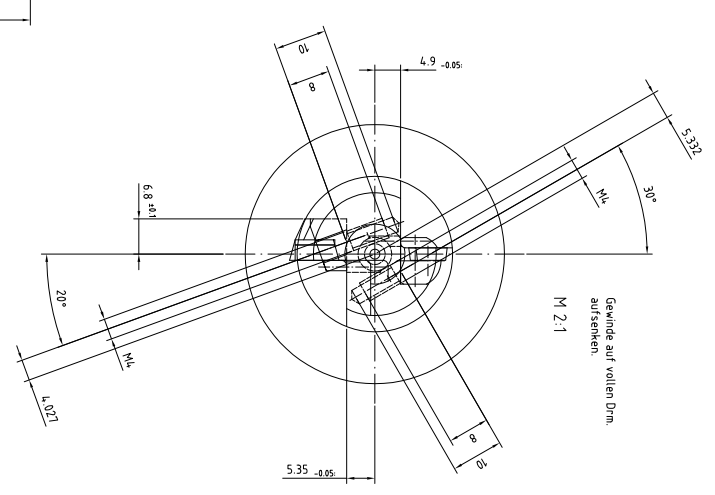
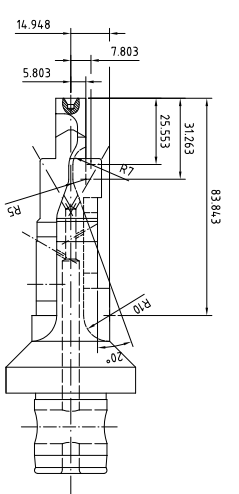
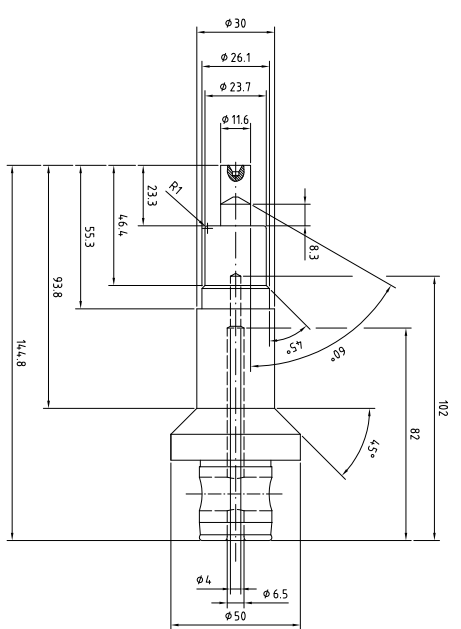
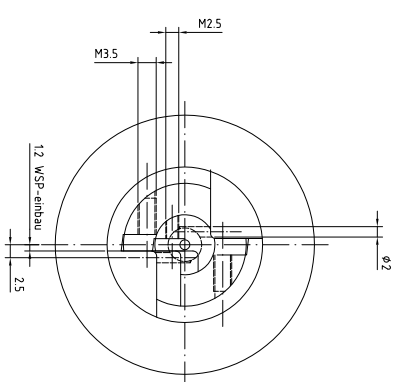
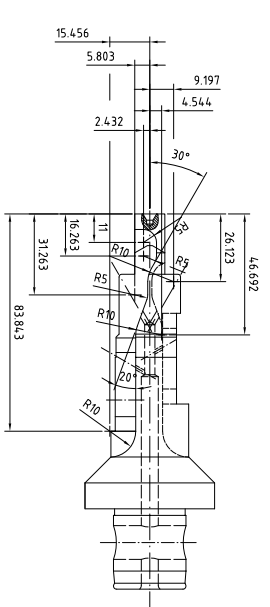
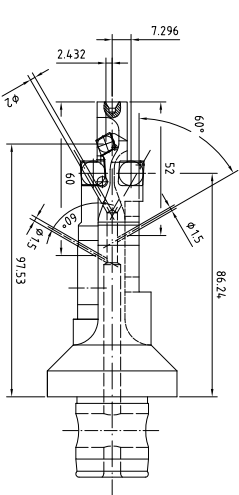
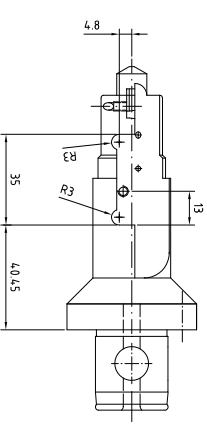
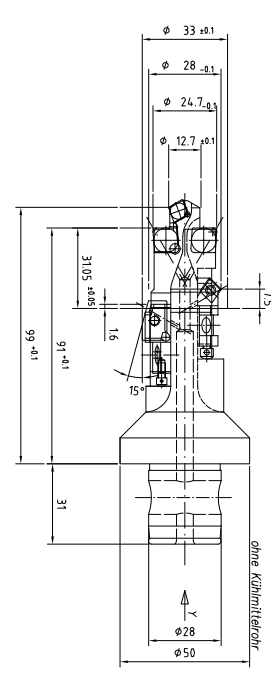
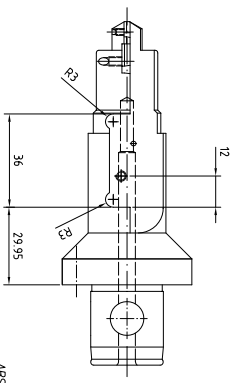


Einbaumaße MAC-FVL 20

Vergütungsstahl
nitrieren auf 450 + 100 HV, Nitrieriefe (Nt1) = 0,2 mm
Gewinde und/oder bezeichneten Bereich abdecken.

Nitrierstahl
nitrieren auf 500 + 200 HV, Nitrieriefe (Nt1) = 0,2 mm
Gewinde und/oder bezeichneten Bereich abdecken.

Zeil		Name		Menge	
1	WSP Stufenanker	1	1		
2					
3					
4					
5					
6					
7					
8					
9					
10					
11					
12					
13					
14					
15					
16					
17					
18					
19					
20					
21					
22					
23					
24					
25					
26					
27					
28					
29					
30					
31					
32					
33					
34					
35					
36					
37					
38					
39					
40					
41					
42					
43					
44					
45					
46					
47					
48					
49					
50					
51					
52					
53					
54					
55					
56					
57					
58					
59					
60					
61					
62					
63					
64					
65					
66					
67					
68					
69					
70					
71					
72					
73					
74					
75					
76					
77					
78					
79					
80					
81					
82					
83					
84					
85					
86					
87					
88					
89					
90					
91					
92					
93					
94					
95					
96					
97					
98					
99					
100					

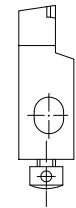
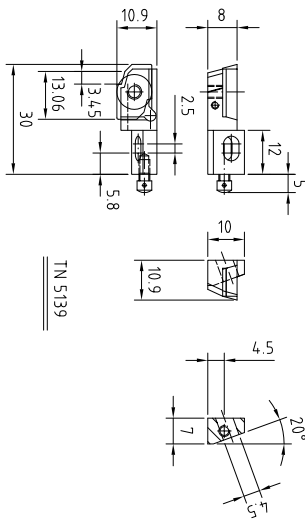
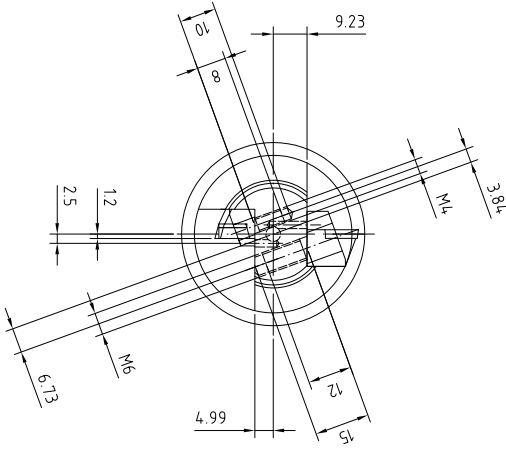
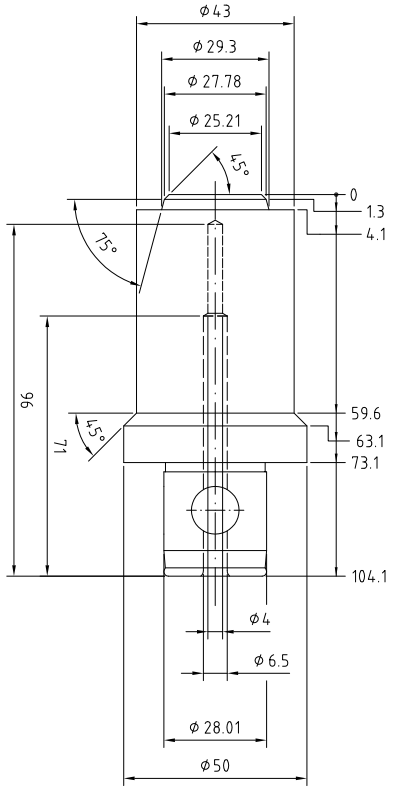
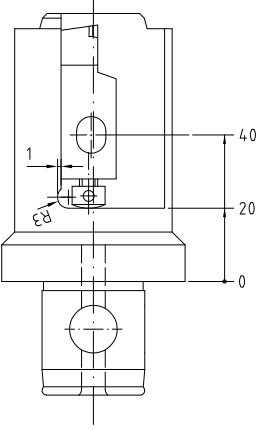
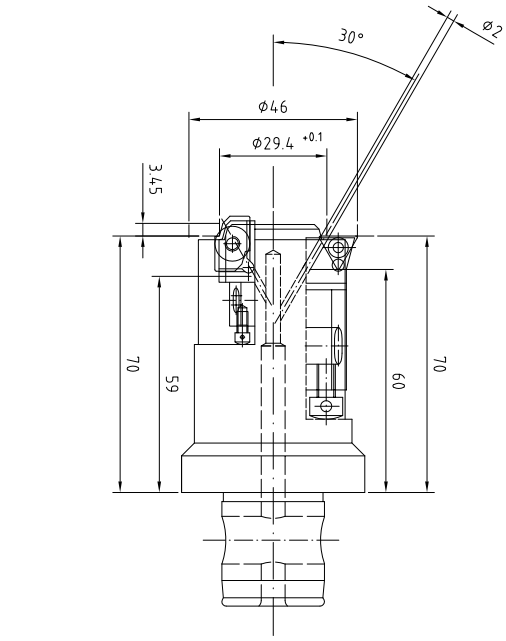
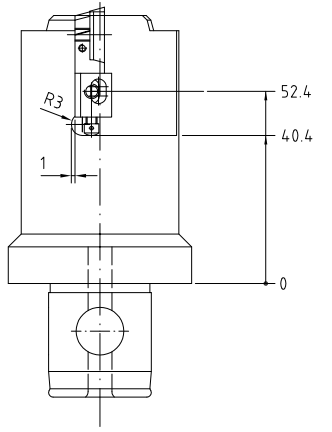


hierzu gehört:
 Wertschreibplatte
 CCMW 06 02 04
 MCM-Nr.: ZWP 9M 08231

Vergütungsstahl
 nitrieren auf 450 + 100 HV, Nitrirtiefe (Nt) = 0,2 mm
 Gewinde und/oder bezeichnen Bereich abdecken.

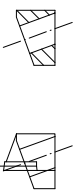
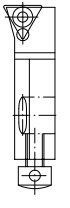
Nitrierstahl
 nitrieren auf 900 + 200 HV, Nitrirtiefe (Nt) = 0,2 mm
 Gewinde und/oder bezeichnen Bereich abdecken.

Zust./ Änderung		Datum		Name		DW-Nr. 83377	
DN118	identifiziert	gültig	11	11	11	11	11
WSP Stufenheber				TN - 3717			



Wendeschneidplatte
TCMT 11 02 04

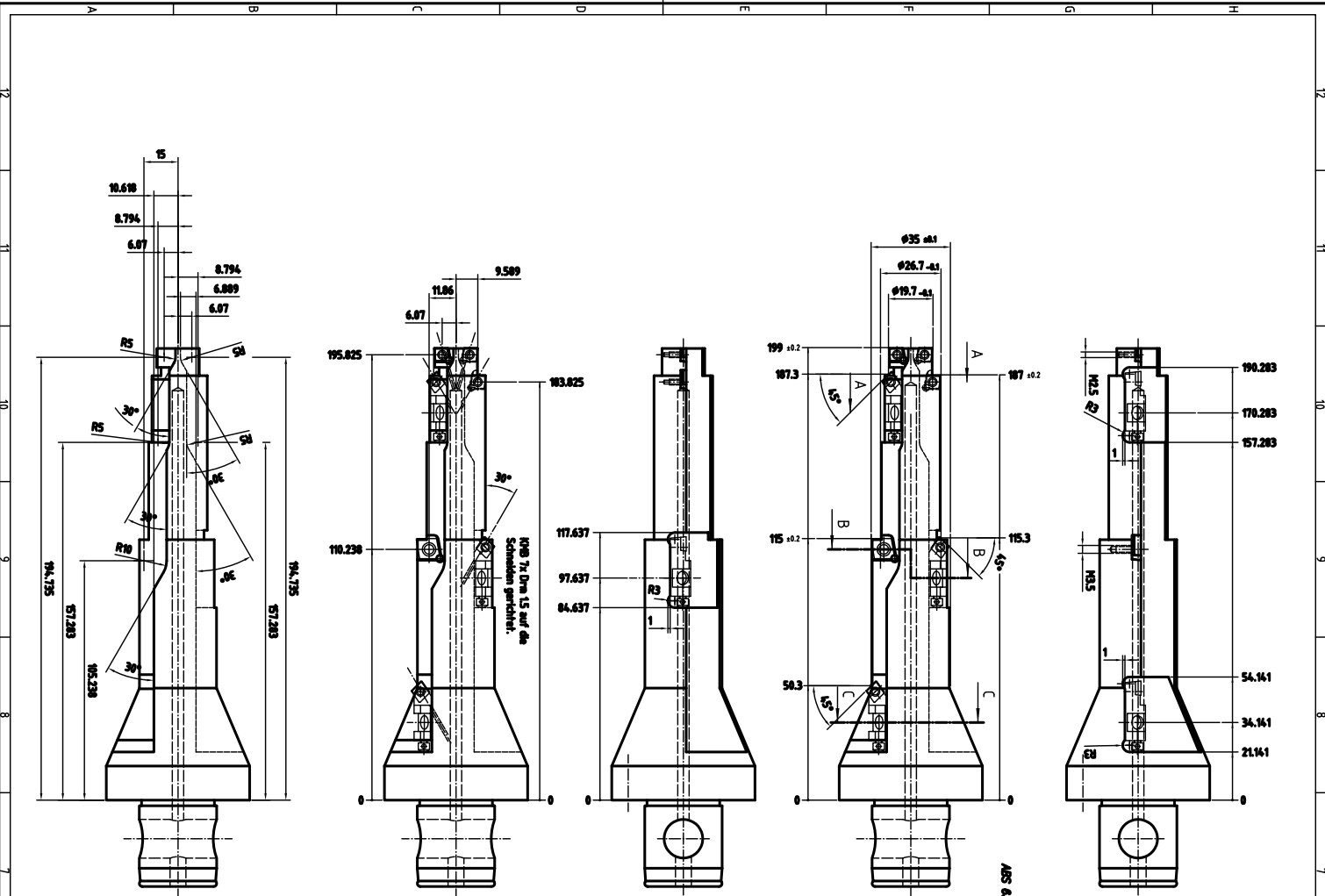
STFCR 10 CA-11



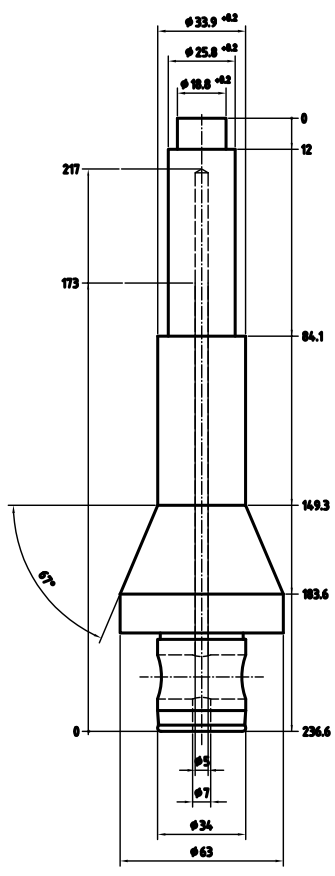
Vergütungsstahl
nitrieren auf 450 + 100 HV, Nitriertiefe (Nht) = 0,2 mm
Gewinde und/oder bezeichneten Bereich abdecken.

Nitrierstahl
nitrieren auf 900 + 200 HV, Nitriertiefe (Nht) = 0,2 mm
Gewinde und/oder bezeichneten Bereich abdecken.

Zust.	Änderung	Datum	Name	DW-Nr.	K13723	TN 3723	Bauf.	Bl.		DIN 7186	Oberfläche	Mäßstab 1:1	Position	Menge
										4er-mittig gebohrt				
		Datum		Name						WSP Stufen senker				
		Bearb.		Zi										
		Gepr.		Zi										
		Norm		Zi										



- Kurzformhaken SCSOR 07 CA-06 PG
- Meterschraube CC 09 13 04
- Meterschraube CC 08 13 04



A-A
B-B
C-C

Vergütungsstahl
 nitieren auf 450 + 100 HV, Nitrierhöhe (NH) = 0.2 mm
 Gewinde und/oder benachbarten Bereich abdichten.

Nitrierstahl
 nitieren auf 500 + 200 HV, Nitrierhöhe (NH) = 0.2 mm
 Gewinde und/oder benachbarten Bereich abdichten.

Übersicht		Material		Menge	
DNITB	Hersteller spez.	Hersteller	Material	Stückzahl	Einheit
WSP Stufenspanner					
TN 3724					